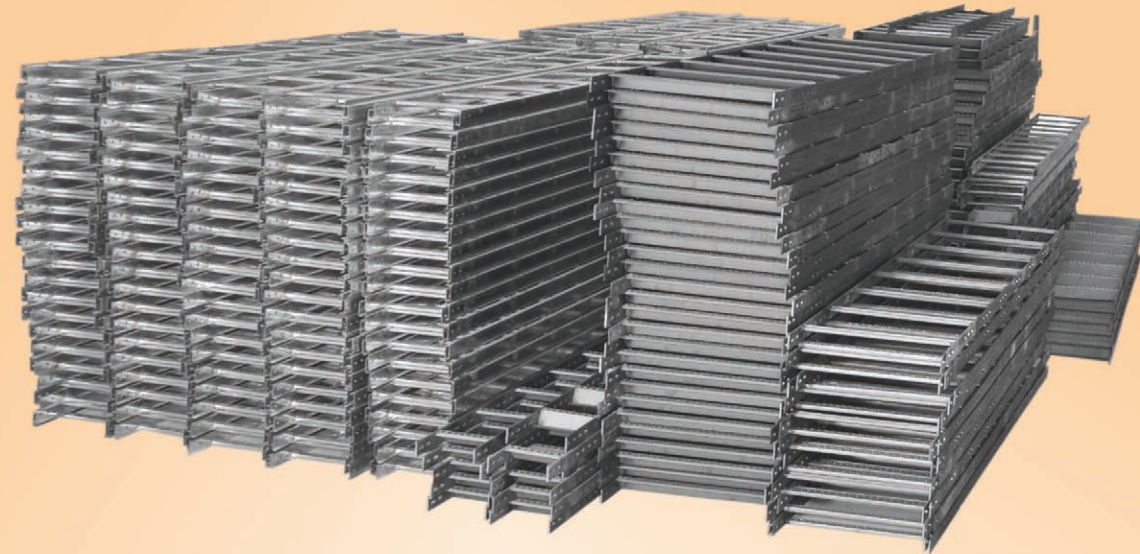
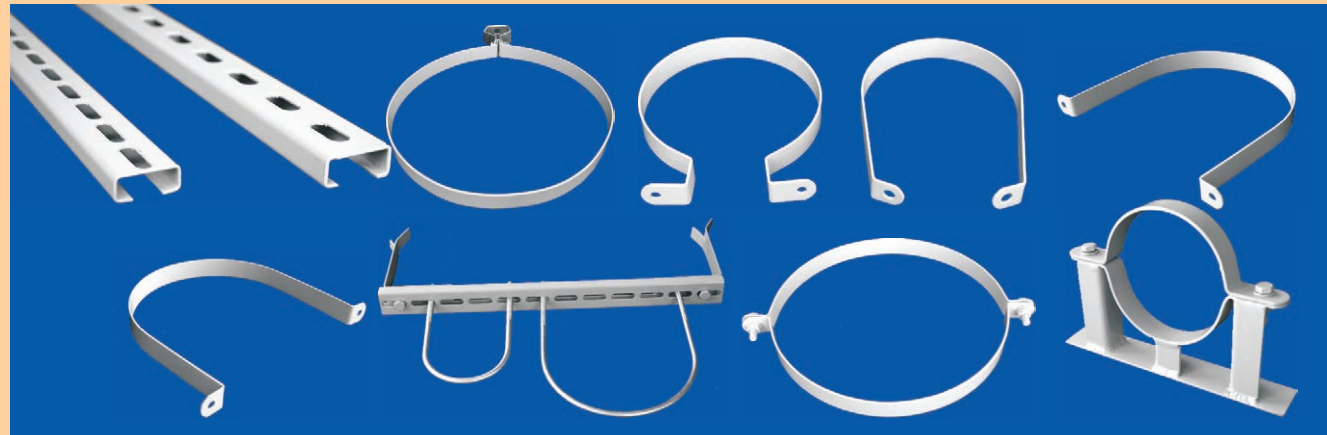


## Supporting Clamps



**FIXOTECH**<sup>®</sup>  
ENGINEERING SYSTEMS PVT. LTD.

*An ISO 9001 : 2008 Certified Company*

**Head Office : Karnataka**

No. 4&5, J.P.R. Building, Gurunanjundaiah Indl. Area, Lakshmipura Main Road, Abbigere, Bangalore-560 090.  
Ph : 080-23254750. Fax : 080-23254751, E-mail : [fixotech@rediffmail.com](mailto:fixotech@rediffmail.com) / [fixotechengs@gmail.com](mailto:fixotechengs@gmail.com)  
[www.fixotech.com](http://www.fixotech.com)

**Branch : Tamilnadu**

No. 10, M.R. Complex, Nehru Street,  
Ram Nagar, Coimbatore-641 009  
Mob : +91-9894679977

**Branch : Kerala**

CC No. 37/107, Subash Cross Road,  
Behind Indiragandhi Co-operative Hospital,  
Kadavanthara, Cochin-682 020  
Ph : +91-484-4017921, Mob : +91-9847837921

**FIXOTECH**<sup>®</sup>  
ENGINEERING SYSTEMS PVT. LTD.

*An ISO 9001 : 2008 Certified Company*



## About us...

**Fixotech Engineering Systems Pvt Ltd.**, an ISO 9001-2008 Certified Company, engaged into manufacturing of Cable Management Systems & Accessories such as Ladder type, Perforated type & Race ways made of MS Sheet, GI Sheet, Aluminum and Stainless Steel. Our mission is to make and provide quality and precision products to the required industries by continuous improvements with the help of advanced technologies. Fixotech owns an advanced infrastructure equipped with sophisticated equipments / machinery having latest technology. These machines are also updated from time to time to meet ever changing customer demands.

We use high grade and superior quality sheets which are subject to quality checking right from the material procurement by our QA team to make our effectively designed and precision engineered products ensuring durability and high performance for the customer. The finished product also undergoes a stringent quality checking before it is being released for dispatch to customer.

Having completed more than one decade in the field we are proud to put in record that our make 'Fixotech' products have found well acceptance in the industry and has gained popularity amongst our clientele for maintaining consistent quality and meeting delivery schedules.

We strive to attain absolute customer satisfaction by offering customized product as per the specific requisites of the customers as and when need arises.

## Why us...

- Wide range of products
- Hightech manufacturing facility
- Skilled/Experienced Professionals
- Competitive Prices
- On time Delivery
- Customization as per customers need

## Product Contents

We are manufacturing Cable Trays and Allied support system. All these products are manufactured in various sizes and types as per the requirements of the customer. These products are made available in different surface finish like Hot Dip, Electro Plated, Powder Coated & Painted.

### Ladder type Cable Tray

### Perforated type cable Tray

### Race Ways

### Junction Boxes

### Slotted Rails

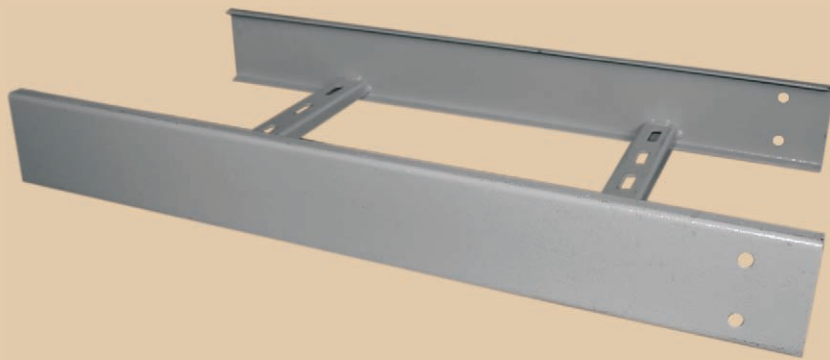
### Wall Brackets

### Hanging Supports

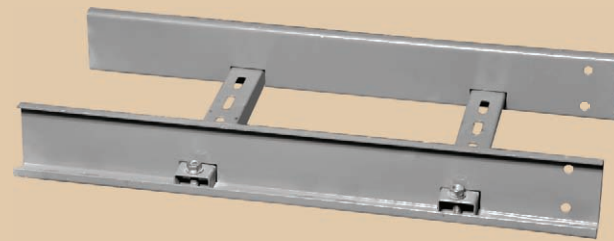
## Our Prestigious Few Customers

- |                               |                           |                                |                           |
|-------------------------------|---------------------------|--------------------------------|---------------------------|
| L & T Limited                 | ETA Engineering Pvt. Ltd. | Pace Electricals               | Amritha Institute         |
| ABB Limited                   | C.R.I. Pumps              | Gopalan Enterprises            | KEF Infrastructure        |
| Jindal Aluminium Limited      | Texmo Industries          | Puravankara Projects Ltd.      | Voltas Limited            |
| Reliance Industries           | Henry & Farad Pvt. Ltd.   | V.R. Engineering               | L&T Ship Builders Ltd.    |
| Siemens Ltd.                  | S.J.R. Builders           | C.T.L. Infocom Ltd.            | Tebma Shipyard Ltd.       |
| Carrier Air Conditioning Ltd. | Sattva Group              | Electronic Control Corporation | Powered EPC Services Ltd. |
| National Contracting Company  | Veero Metal               | Fouress Corporation            | Presston Engineering      |

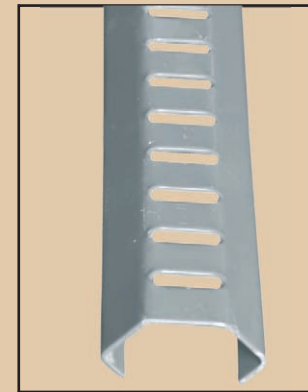
### Ladder type Cable Tray



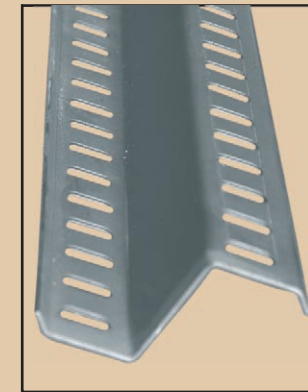
### Boltable Ladder type Cable Tray



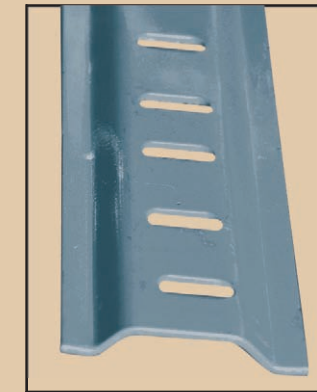
### Types of Rungs



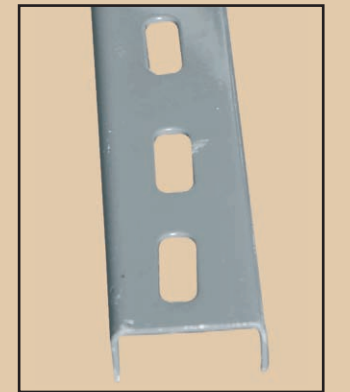
C Type Rungs



Z Type Rungs



I Type Rungs



U Type Rungs

Welded Rung type and Boltable Rung type

Ladder type cable trays are fabricated out of steel sheets conforming to IS 1079 : 1973 & IS 513 : 1994.

#### Standard Sizes

Length : 2.5 to 3 Mtr.

Runner Height (H) : 40, 50, 60, 75, 100 & 120mm

Runner Collar (C) : 12, 15, 20, 25 & 30mm

Rung Size : 35X15mm, 40X20mm & 50mmX20mm

Thickness (T) : 1.6, 2, 2.5 & 3mm

Rung Slot Size : 8X25mm, 8X30mm, 10X25mm, 12X25mm

Finish Available : Pre-Galvanized G.I., M.S. Hotdip Galvanized, Electro Plated, Powder Coated, Epoxy & Enamel Painted.

#### Accessories

Horizontal Bend,  
Vertical Inside/Outside Bends,

Tee-Equal & Unequal

Cross-Equal & Unequal

Reducer : Straight/Right/Left

Offset Bend

Bending Radius : 300/450/600/1000  
(Depends upon customer choice)

Degrees : 30°, 45°, 60°, 90°

Curved & Cornered Bends are available

### Ladder type Accessories



T-Joint



Cross Joint



Horizontal Curved Bend



Vertical Corner Bend

**Nb :- All Bends are available in different radius**

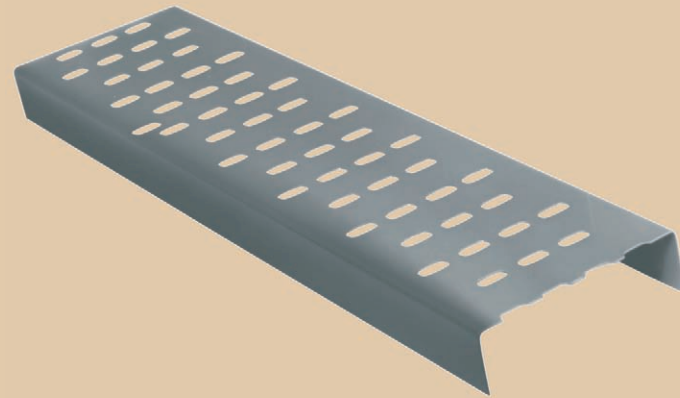
### Hot Dip Galvanizing

Cable Tray & Accessories shall be Hot dip galvanized after fabrication as per IS 2629-1985 & IS 4759-1984.

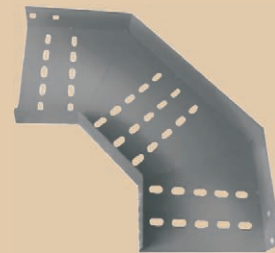
The amount of zinc deposit for trays shall be maintained as per the IS table mentioned below :

SI No.	Product	Mass of Coating g/m <sup>2</sup>	In microns
<b>All fabricated Articles</b>			
1.	5mm thick and over	610	86
2.	Under 5mm not less than 2mm	460	64
3.	Under 2mm not less than 1.2mm	340	49

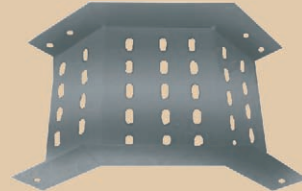
### Perforated type Cable Trays



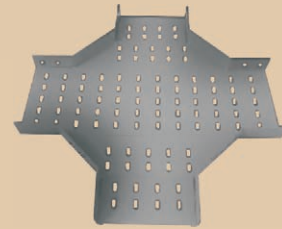
Cornered T Joint



Cornered Horizontal Bend



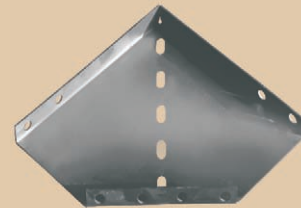
Cornered Vertical Bend



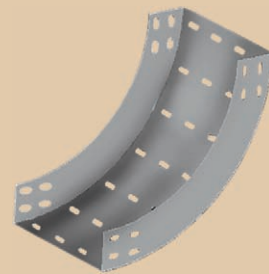
Cornered Cross



Single formed Tee



Single formed Horizontal Bend



Curved Vertical Bend



Straight Reducer

Perforated type cable trays are fabricated out of single sheet steel conforming to IS 1079 : 1973 & IS 513 : 1994. in various thickness.

#### Standard Sizes

Length : 2.5 to 3 Mtr.

Width : 50, 75, 100, 150, 200, 300, 450, 600 & 900mm

Height (H) : 20, 25, 30, 40, 70 & 100mm

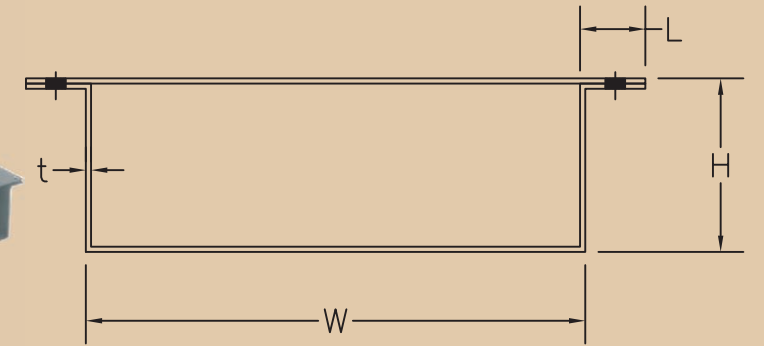
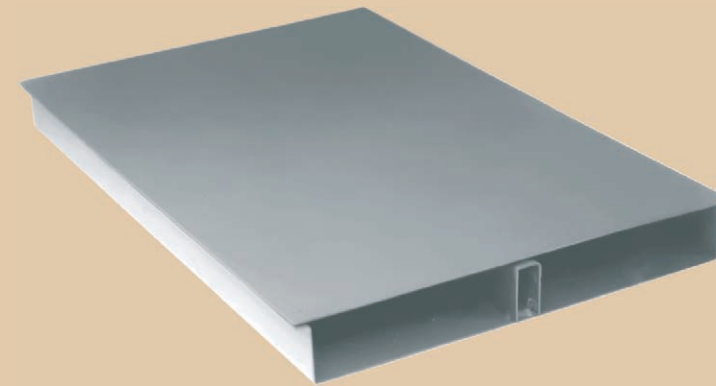
Collar (C) : 12, 15, 20, 25 & 30mm

Thickness (T) : 1.6, 2, 2.5 & 3mm

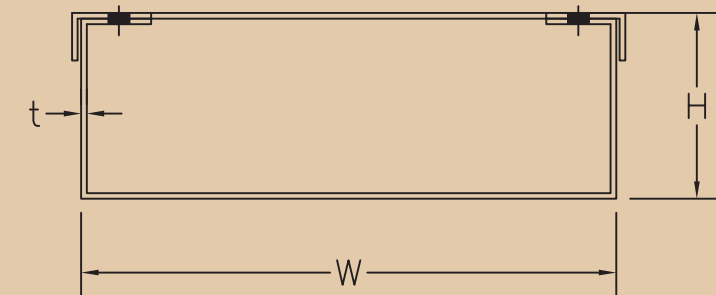
Perforation : Slots 10X20mm, 10X30mm

Finish Available : Pre-Galvanized G.I., M.S. Hotdip Galvanized, Electro Plated, Powder Coated, Epoxy & Enamel Painted.

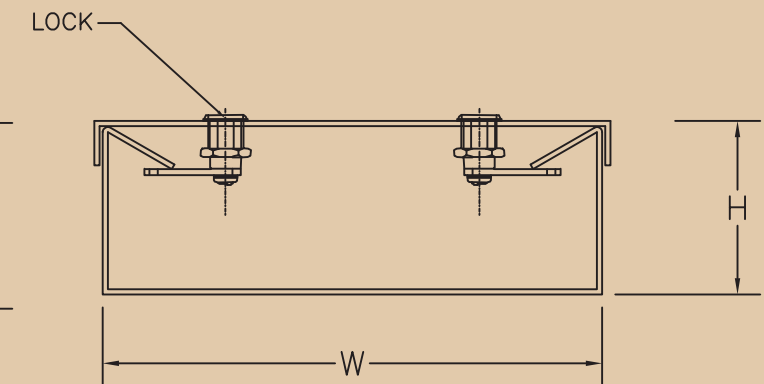
### Floor Race Ways



### Ceiling Race Ways



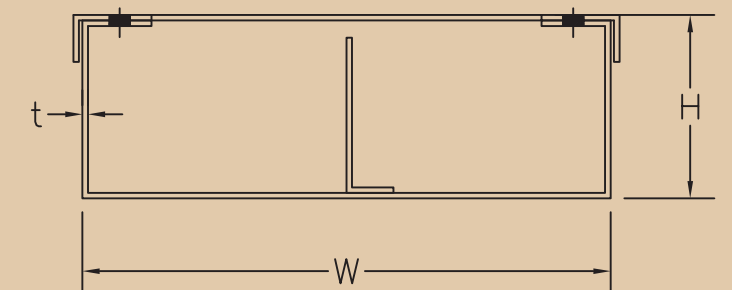
### Ceiling Race Ways with Locked Cover



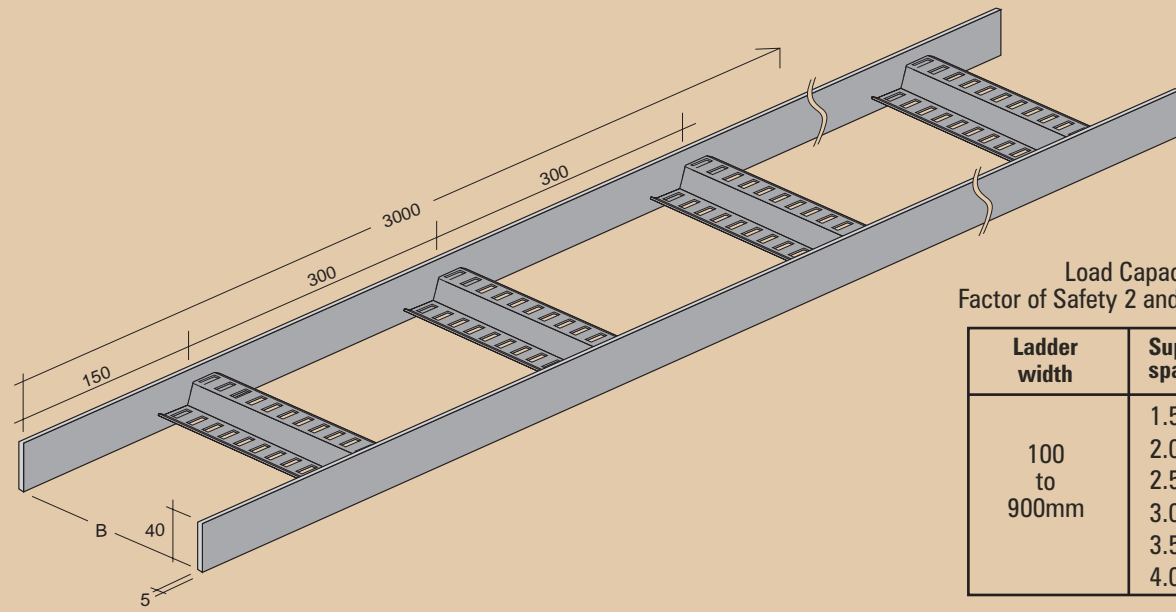
### Floor Junction Box



### Ceiling Race Ways with Partition

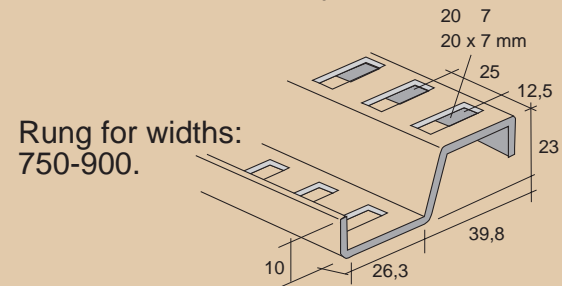
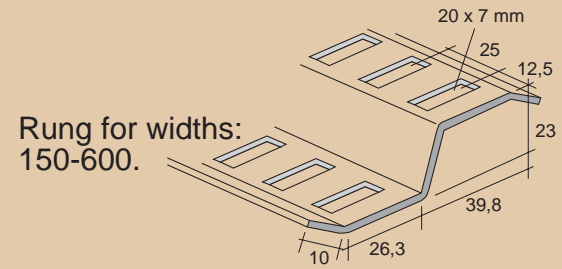


## Cable Tray for Marine Application



Load Capacity Chart  
Factor of Safety 2 and Max.1% Deflection

Ladder width	Support spacing	Load kg
100 to 900mm	1.5 mtr.	290
	2.0 mtr.	120
	2.5 mtr.	60
	3.0 mtr.	40
	3.5 mtr.	40
4.0 mtr.		

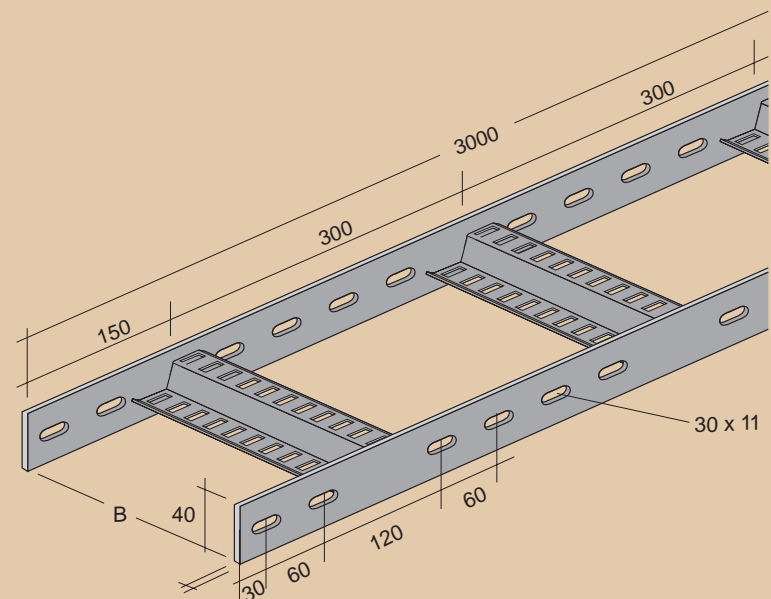


ZRT cable ladders with Z-rungs

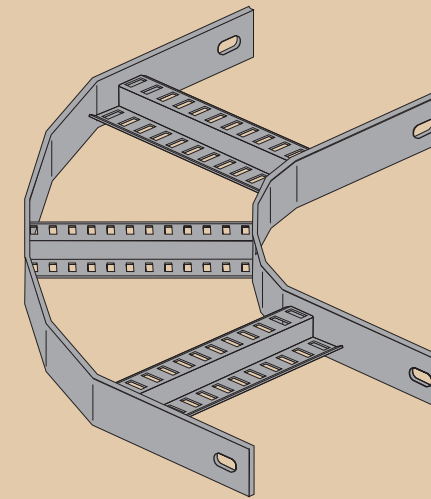
Type/Width	Weight
ZRT-100	3.6 kg
ZRT-150	3.7 kg
ZRT-200	3.9 kg
ZRT-300	4.3 kg
ZRT-400	4.5 kg
ZRT-450	4.6 kg
ZRT-500	4.7 kg
ZRT-600	5.3 kg

ZRT cable ladders with slotted side-pieces

Type/Width	Weight
ZRT-150	3.6 kg
ZRT-200	3.8 kg
ZRT-300	4.2 kg
ZRT-400	4.4 kg
ZRT-450	4.5 kg
ZRT-500	4.7 kg
ZRT-600	5.2 kg



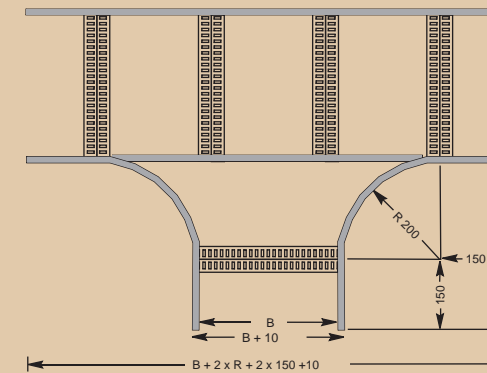
## ZRT Horizontal Bend



Weight Chart

Type/Width	Weight
ZRT-150	2.9 kg
ZRT-200	3.3 kg
ZRT-300	4.1 kg
ZRT-400	4.8 kg
ZRT-450	5.1 kg
ZRT-500	5.6 kg
ZRT-600	6.3 kg

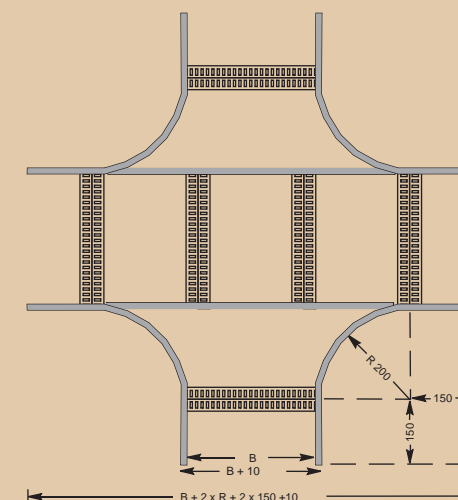
## ZRT Tee Joint



Weight Chart

Type/Width	Weight
ZRT-150	3.1 kg
ZRT-200	3.6 kg
ZRT-300	5.5 kg
ZRT-400	6.5 kg
ZRT-450	7.5 kg
ZRT-500	8.5 kg
ZRT-600	10.5 kg

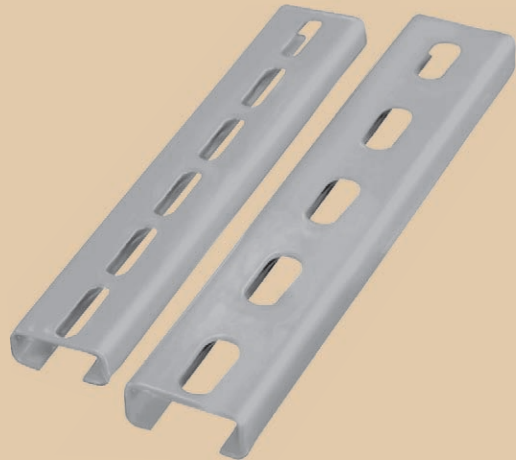
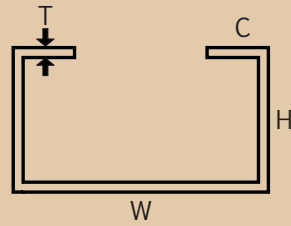
## ZRT Cross Joint



Weight Chart

Type/Width	Weight
ZRT-150	7.0 kg
ZRT-200	7.5 kg
ZRT-300	6.0 kg
ZRT-400	7.1 kg
ZRT-450	7.4 kg
ZRT-500	8.4 kg
ZRT-600	9.3 kg

**Slotted Rails**



Dimension Details					
Model	Thickness	Width	Height	Collar	Slot Size
STANDARD	1.0, 1.2, 1.6, 2.0	30	15	10	25 X 8.5
		35	17	12.5	25 X 10.5 75 X 8.5
HEAVY DUTY	1.6, 2.0, 2.5, 3.0	40	22	12.5	30 X 10.5
		45	22	13	30 X 12.5
EXTRA DUTY	2.0, 2.5, 3.0	41	41	13	30 X 12.5

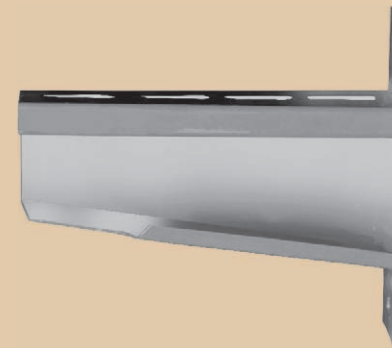
**Street light Junction Box**



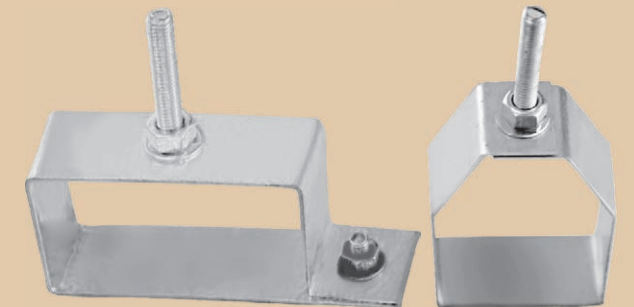
**Rail Leg**



**Heavy duty wall bracket**

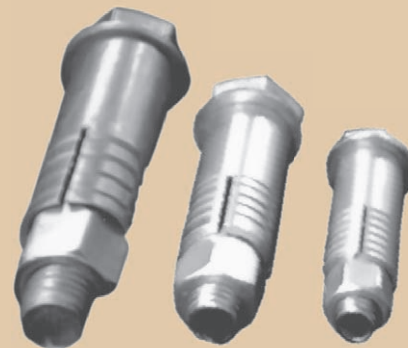


**Hanging Support**

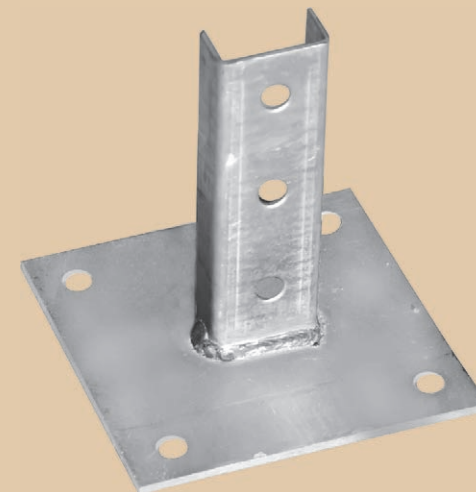


Dimension Details		
Model	Sleeve Length	Sleeve Outer Dia
M 06	30mm	10mm
M 08	35mm	12.7mm
M 10	40mm	15.9mm
M 12	53mm	19mm
M 16	63mm	22mm

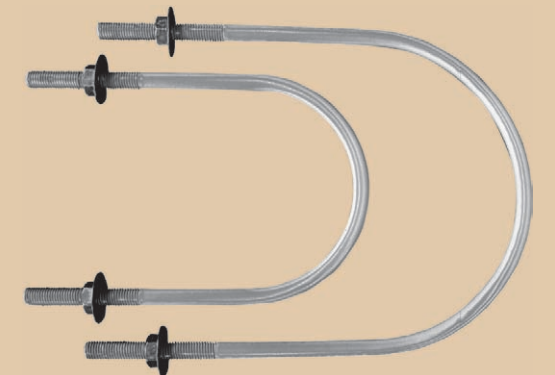
**Anchor Fasteners**



**Rail mounting bracket**



**U bolt**



**Vertical Support**

Dimension Details			
Thickness	Depth	Width	Slot Size
1.6, 2.0, 2.5, 3.0mm	50, 65, 75, 100mm	100-900mm	30X8.5/10, 75X10/12.5, 100X10mm/12.5

